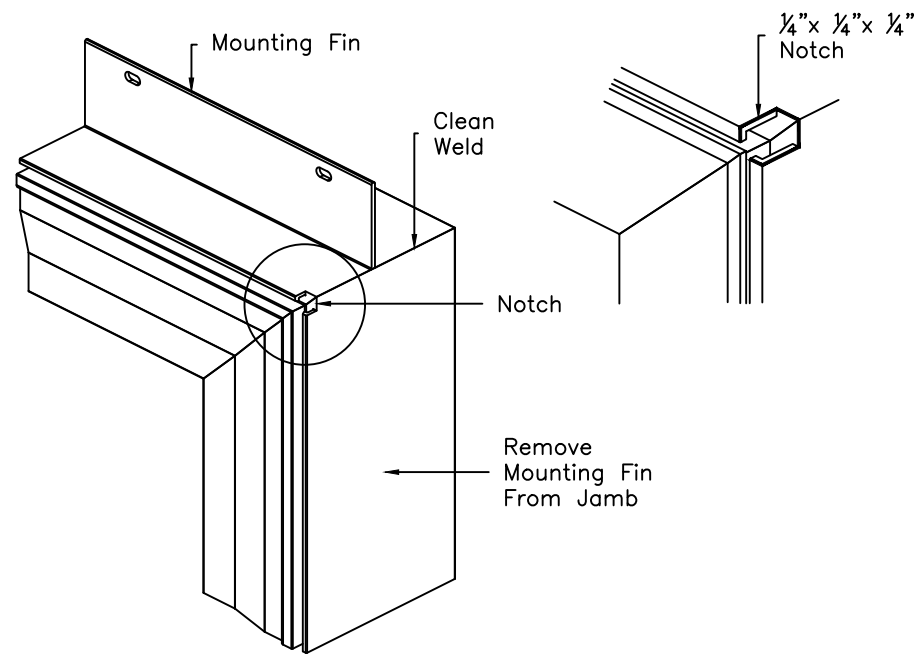
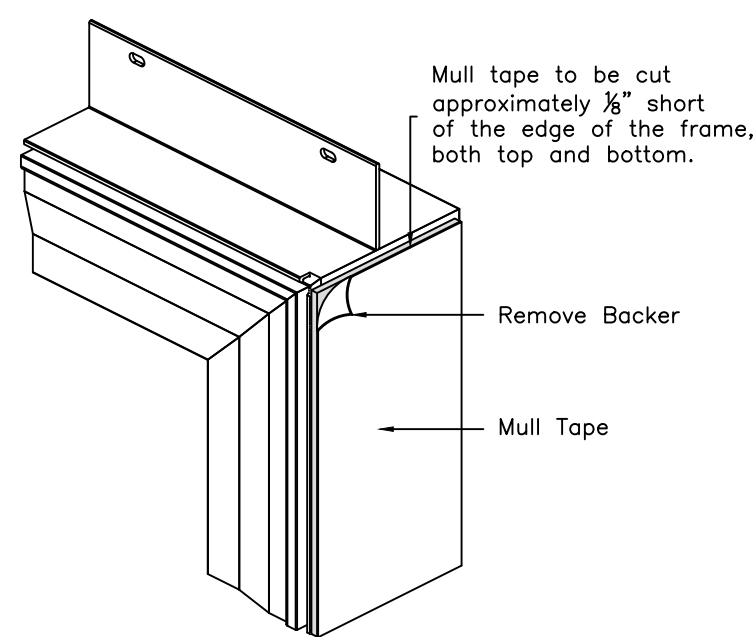


Step 1



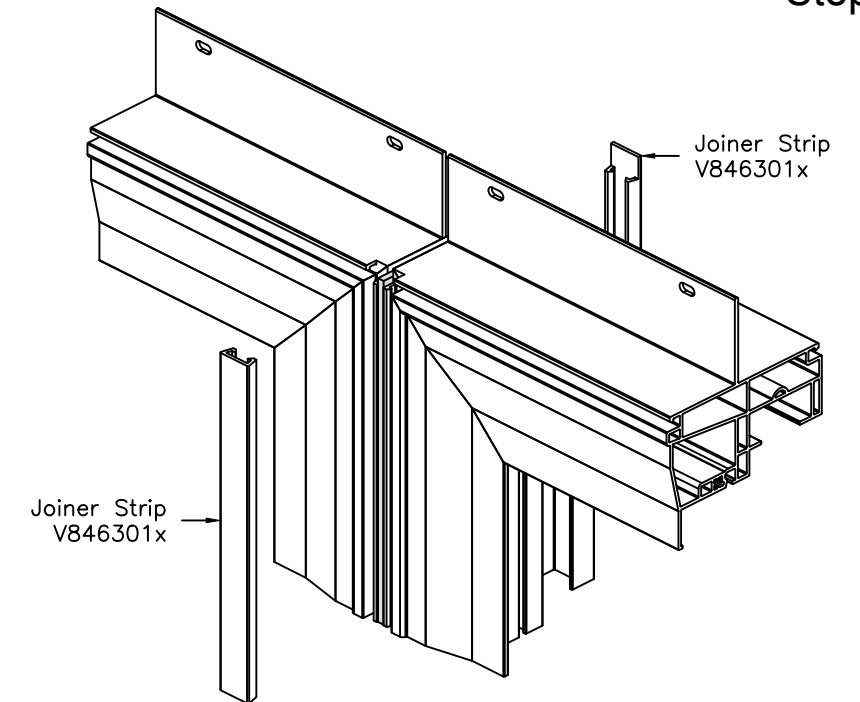
Remove mounting fin and J-Channel (where applicable) from the jamb of the units to be mull together. Notch the exterior accessory groove, as shown, to allow for the drip-cap return. Make sure all welds are cleaned flush with the frame.

Step 2



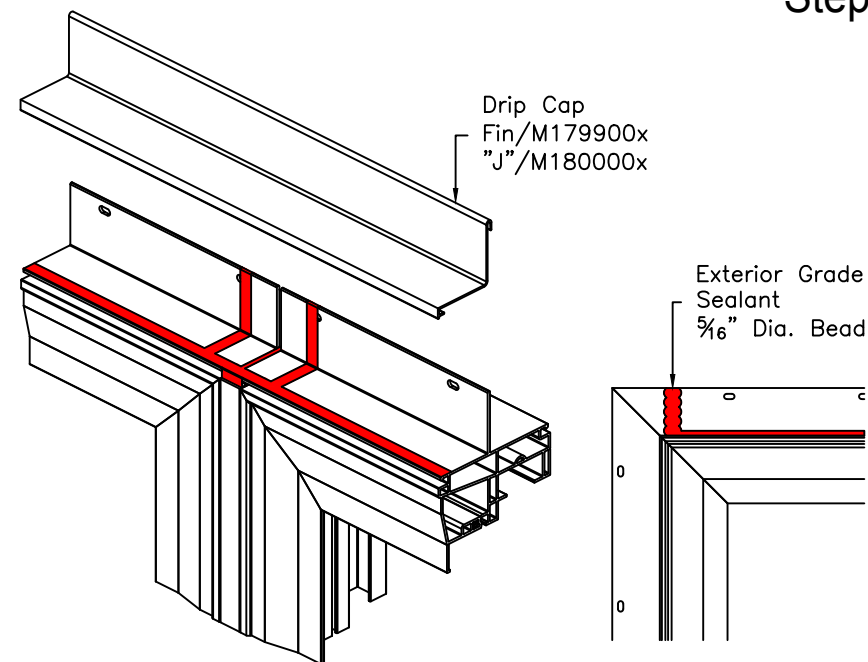
Apply continuous foam mull tape to the jamb of one of the units. The tape should be $\frac{1}{8}$ " short, at both top and bottom of jamb, to allow sealant to be applied between the units. Peel the backer off the tape to ready the unit(s) for mulling.

Step 3



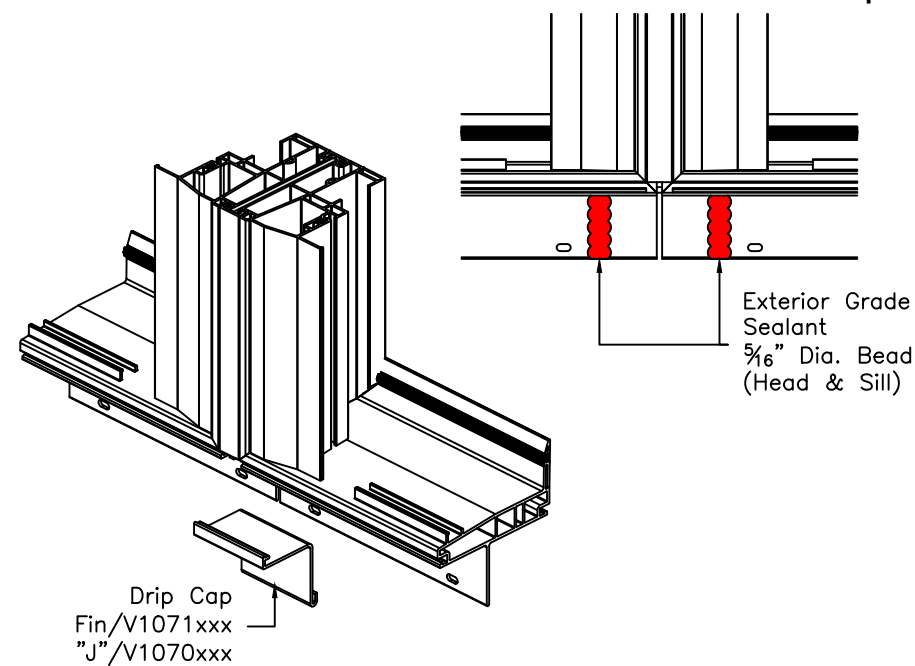
Align frames and slide together. Apply the exterior joiner strip. Make sure that the exterior joiner strip is trimmed back to bottom edge of the accessory groove, at the head of the unit(s), to allow for the drip-cap return. Apply the interior joiner strip.

Step 4



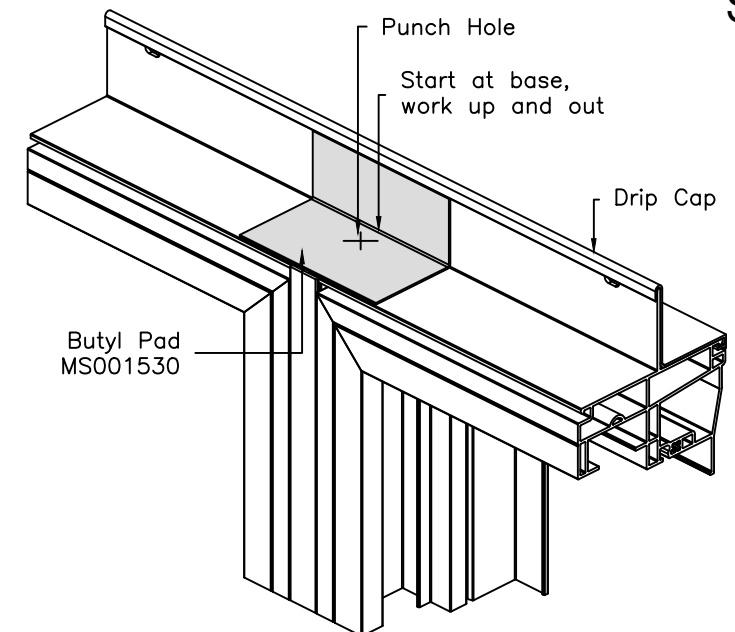
Apply a bead of sealant across the head of the unit, on the exterior edge, and up the mounting fin, as shown. Apply a bead of sealant up the mounting fin, on each side of the joint between the unit(s). Apply a full length piece of drip cap into the exterior accessory groove and roll back over the mounting fin, seating it in the sealant. Crimp the drip cap over the mounting.

Step 5



Apply a bead of sealant at the sill of the unit, on the exterior edge, and up the mounting fin on each side of the mull joint, as shown. Apply a 2" piece of drip cap into the exterior accessory groove and roll back over the mounting fin, seating it in the sealant. Crimp the drip cap over the mounting fin.

Step 6



To the interior of the unit(s), at the head and sill, apply a 3"x3" butyl pad over the joint of the mullled units. Starting at the base of the mounting fin, fold the butyl pad up the mounting fin and across the interior of the unit, as shown. Make sure to fold the pad into the corner of the mounting fin and work any excess air bubbles out. Punch a small hole in the butyl pad, and apply sealant between the units, until it is full. Make sure to work out any excess sealant so that the butyl pad is flush with the edge of the unit(s), as well as the interior of the mounting fin.